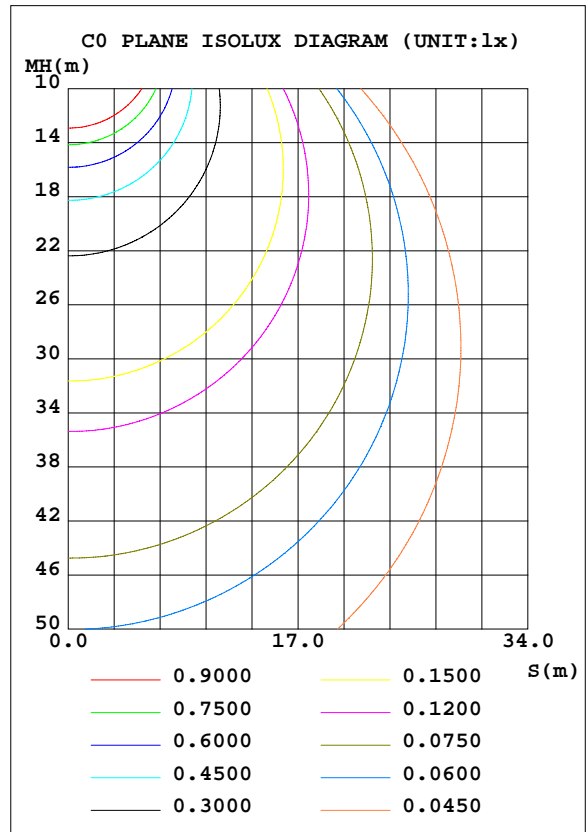
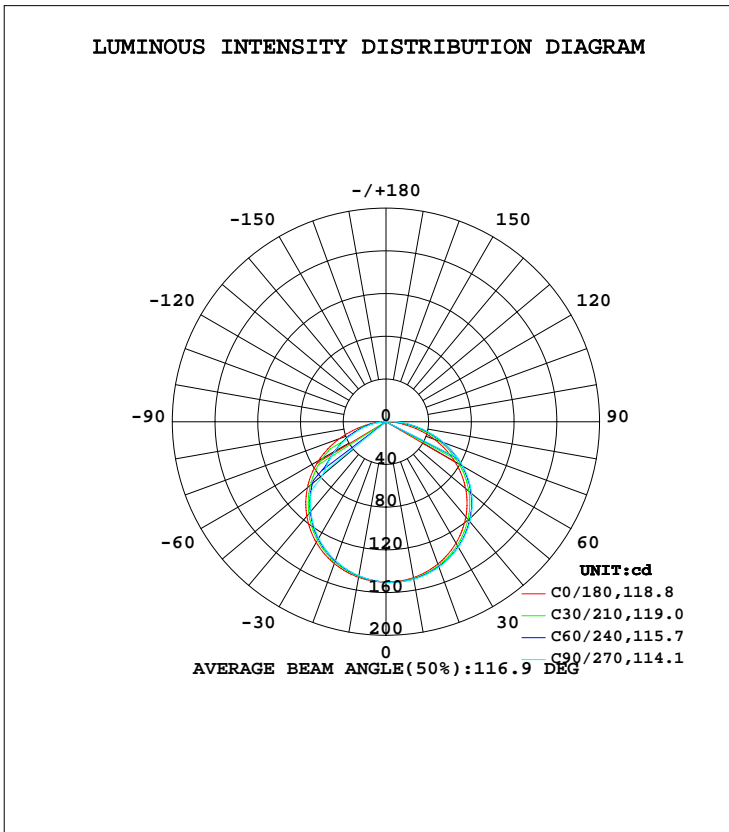


LUMINAIRE PHOTOMETRIC TEST REPORT

NAME: 软灯条	TYPE:	WEIGHT:
SPEC.:LWF-NS-132467W120-0612	DIM.: 0.5	SERIAL No.:
MFR.:LEDWIDE LIGHTING CO., LTD	SUR.:0.006*0.5	Shielding Angle:

DATA OF LAMP 5		PHOTOMETRIC DATA Eff: 95.73 lm/W			
MODEL		I _{max} (cd)	150.5	S/MH(C0/180)	1.29
NOMINAL POWER(W)	4.8	LOR(%)	100.0	S/MH(C90/270)	1.25
RATED VOLTAGE(V)	24	TOTAL FLUX(lm)	463.57	η UP, DN(C0-180)	1.1,53.2
NOMINAL FLUX(lm)	463.567	CIE CLASS	DIRECT	η UP, DN(C180-360)	0.8,44.8
LAMPS INSIDE	1	η up(%)	2.0	CIBSE SHR NOM	1.50
TEST VOLTAGE(V)	24	η down(%)	98.0	CIBSE SHR MAX	1.50



C Range: 0 - 360DEG
 C Interval: 15.0DEG
 Test Speed: HIGH
 Temperature:25.3DEG
 Operators:
 Test Date:2019-12-12

γ Range: 0 - 180DEG
 γ Interval: 1.0DEG
 Test System:EVERFINE GO-2000A_V1 SYSTEM V2.0.362
 Humidity:65.0%
 Test Distance:12.586m [K=1.0000]
 Remarks:

ZONAL FLUX DIAGRAM

ZONAL FLUX DIAGRAM:

γ	C0	C45	C90	C135	C180	C225	C270	C315	γ	Φ zone	Φ total	%lum, lamp
10	148.2	149.3	149.7	148.5	147.9	146.8	146.4	146.3	0- 10	14.21	14.21	3.06,3.06
20	141.8	144.1	144.8	143.3	141.4	139.1	138.4	138.7	10- 20	40.97	55.18	11.9,11.9
30	131.2	134.6	135.6	133.7	130.5	127.1	126.1	126.8	20- 30	62.94	118.1	25.5,25.5
40	116.3	120.9	122.2	119.8	115.4	111.0	109.5	110.9	30- 40	77.37	195.5	42.2,42.2
50	97.35	103.0	104.6	101.8	96.09	90.78	78.34	90.75	40- 50	82.07	277.6	59.9,59.9
60	74.35	81.11	82.92	79.75	72.88	53.87	55.50	46.91	50- 60	73.83	351.4	75.8,75.8
70	48.07	55.67	57.66	54.21	46.43	30.59	32.17	25.87	60- 70	56.52	407.9	88,88
80	20.75	28.82	31.08	27.51	19.70	13.00	13.39	8.487	70- 80	34.09	442.0	95.3,95.3
90	1.560	7.924	9.841	6.921	1.379	1.796	2.064	1.172	80- 90	12.50	454.5	98,98
100	0.5663	1.023	1.787	0.4355	0.5424	0.5668	0.6410	0.5418	90-100	1.831	456.3	98.4,98.4
110	1.002	0.8463	0.7469	0.7559	0.8544	0.8376	0.9366	0.8949	100-110	0.7680	457.1	98.6,98.6
120	1.363	1.290	1.166	1.208	1.117	1.158	1.208	1.166	110-120	1.032	458.1	98.8,98.8
130	1.700	1.684	1.683	1.618	1.389	1.396	1.462	1.405	120-130	1.231	459.4	99.1,99.1
140	1.848	1.824	2.036	1.856	1.660	1.782	1.676	1.577	130-140	1.278	460.6	99.4,99.4
150	1.840	1.996	2.045	2.004	1.963	1.955	1.906	1.815	140-150	1.159	461.8	99.6,99.6
160	1.963	2.152	2.045	2.242	2.251	2.094	2.210	2.094	150-160	0.9305	462.7	99.8,99.8
170	2.103	2.218	2.144	2.251	2.481	2.259	2.415	2.259	160-170	0.6141	463.3	100,100
180	2.489	2.456	2.497	2.407	2.505	2.398	2.513	2.382	170-180	0.2216	463.6	100,100
DEG	LUMINOUS INTENSITY:cd									UNIT:lm		

Conical surface Flux(90deg): 236.65 lm

%lum = 51.0%
%lamp = 51.0%

Conical surface Flux(120deg): 351.39 lm

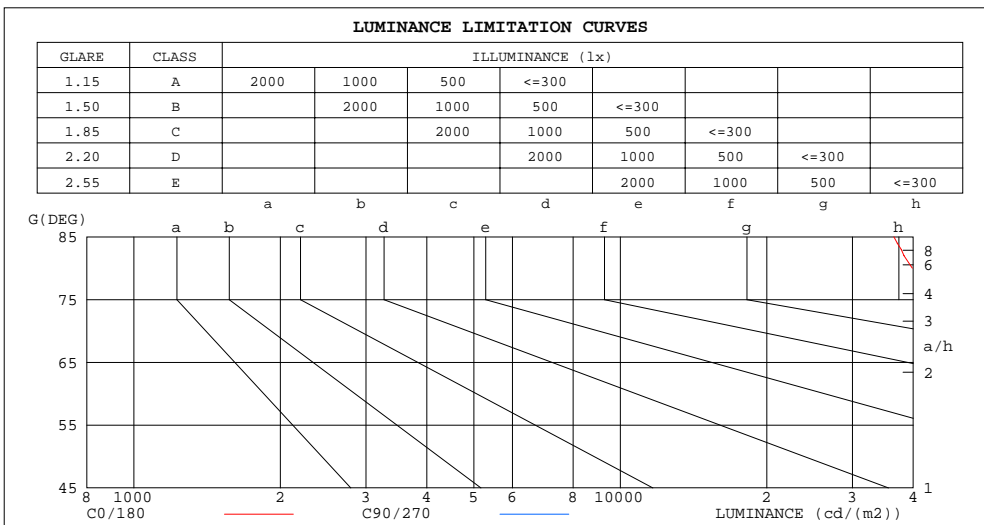
%lum = 75.8%
%lamp = 75.8%

C Range: 0 - 360DEG
C Interval: 15.0DEG
Test Speed: HIGH
Temperature:25.3DEG
Operators:
Test Date:2019-12-12

γ Range: 0 - 180DEG
γ Interval: 1.0DEG
Test System:EVERFINE GO-2000A_V1 SYSTEM V2.0.362
Humidity:65.0%
Test Distance:12.586m [K=1.0000]
Remarks:

LUMINANCE LIMITATION CURVES

NAME: 软灯条	TYPE:	WEIGHT:
SPEC.:LWF-NS-132467W120-0612	DIM.: 0.5	SERIAL No.:
MFR.:LEDWIDE LIGHTING CO., LTD	SUR.:0.006*0.5	Shielding Angle:



LUMINANCE cd/(m2)		
G(DEG)	C0/180	C90/270
85	36507	72863
80	39834	59668
75	44356	56997
70	46851	56200
65	48529	55745
60	49569	55279
55	50171	54786
50	50481	54262
45	50622	53734

C Range: 0 - 360DEG
 C Interval: 15.0DEG
 Test Speed: HIGH
 Temperature:25.3DEG
 Operators:
 Test Date:2019-12-12

γ Range: 0 - 180DEG
 γ Interval: 1.0DEG
 Test System:EVERFINE GO-2000A_V1 SYSTEM V2.0.362
 Humidity:65.0%
 Test Distance:12.586m [K=1.0000]
 Remarks:

WEC AND CCEC

NAME: 软灯条	TYPE:	WEIGHT:
SPEC.:LWF-NS-132467W120-0612	DIM.: 0.5	SERIAL No.:
MFR.:LEDWIDE LIGHTING CO., LTD	SUR.:0.006*0.5	Shielding Angle:

ρcc	80%			70%			50%			30%			10%			0
ρw	50%	30%	10%	50%	30%	10%	50%	30%	10%	50%	30%	10%	50%	30%	10%	0
ρfc	20%			20%			20%			20%			20%			0
RCR	RCR:Room Cavity Ratio						Wall Exitance Coefficients(WEC)									
0.0																
1.0	.321	.183	.058	.313	.179	.057	.299	.172	.055	.286	.165	.053	.274	.159	.051	
2.0	.298	.164	.050	.292	.161	.049	.279	.155	.048	.267	.150	.047	.256	.145	.046	
3.0	.275	.146	.044	.269	.144	.043	.257	.139	.042	.247	.135	.041	.237	.131	.041	
4.0	.253	.131	.039	.247	.129	.038	.237	.126	.038	.228	.122	.037	.219	.119	.036	
5.0	.233	.119	.034	.228	.117	.034	.219	.114	.034	.211	.111	.033	.203	.108	.033	
6.0	.216	.108	.031	.211	.107	.031	.203	.104	.030	.196	.102	.030	.189	.099	.029	
7.0	.200	.099	.028	.197	.098	.028	.189	.096	.028	.183	.094	.027	.176	.092	.027	
8.0	.187	.091	.026	.184	.090	.026	.177	.088	.025	.171	.087	.025	.165	.085	.025	
9.0	.175	.085	.024	.172	.084	.024	.166	.082	.023	.161	.081	.023	.155	.079	.023	
10.0	.165	.079	.022	.162	.078	.022	.156	.077	.022	.151	.075	.021	.147	.074	.021	

ρcc	80%			70%			50%			30%			10%			0
ρw	50%	30%	10%	50%	30%	10%	50%	30%	10%	50%	30%	10%	50%	30%	10%	0
ρfc	20%			20%			20%			20%			20%			0
RCR	RCR:Room Cavity Ratio						Ceiling Cavity Exitance Coefficients(CCEC)									
0.0	.205	.205	.205	.176	.176	.176	.120	.120	.120	.069	.069	.069	.022	.022	.022	
1.0	.196	.171	.148	.168	.147	.128	.115	.101	.088	.066	.058	.051	.021	.019	.017	
2.0	.188	.147	.112	.161	.127	.097	.110	.088	.068	.064	.051	.040	.020	.016	.013	
3.0	.181	.130	.089	.155	.112	.077	.106	.078	.054	.061	.045	.032	.020	.015	.010	
4.0	.173	.116	.073	.148	.101	.063	.102	.070	.045	.059	.041	.026	.019	.013	.009	
5.0	.165	.106	.062	.142	.092	.054	.098	.064	.038	.057	.038	.023	.018	.012	.007	
6.0	.158	.098	.054	.136	.085	.047	.094	.059	.033	.054	.035	.020	.018	.011	.007	
7.0	.151	.091	.048	.130	.079	.042	.090	.055	.030	.052	.033	.018	.017	.011	.006	
8.0	.145	.085	.044	.125	.074	.038	.086	.052	.027	.050	.031	.016	.016	.010	.005	
9.0	.139	.080	.041	.120	.070	.035	.083	.049	.025	.048	.029	.015	.016	.009	.005	
10.0	.133	.076	.038	.115	.066	.033	.080	.046	.023	.046	.027	.014	.015	.009	.005	

C Range: 0 - 360DEG
 C Interval: 15.0DEG
 Test Speed: HIGH
 Temperature:25.3DEG
 Operators:
 Test Date:2019-12-12

γ Range: 0 - 180DEG
 γ Interval: 1.0DEG
 Test System:EVERFINE GO-2000A_V1 SYSTEM V2.0.362
 Humidity:65.0%
 Test Distance:12.586m [K=1.0000]
 Remarks:

UGR(Unified Glare Rating) Table

NAME: 软灯条		TYPE:					WEIGHT:				
SPEC.:LWF-NS-132467W120-0612		DIM.: 0.5					SERIAL No.:				
MFR.:LEDWIDE LIGHTING CO., LTD		SUR.:0.006*0.5					Shielding Angle:				
ceiling/cavity	0.7	0.7	0.5	0.5	0.3	0.7	0.7	0.5	0.5	0.3	
walls	0.5	0.3	0.5	0.3	0.3	0.5	0.3	0.5	0.3	0.3	
working plane	0.2	0.2	0.2	0.2	0.2	0.2	0.2	0.2	0.2	0.2	
Room dimensions	Viewed crosswise					Viewed endwise					
x = 2H y = 2H	29.4	31.0	29.7	31.2	31.4	29.8	31.4	30.1	31.6	31.8	
3H	31.1	32.5	31.4	32.8	33.1	31.7	33.1	32.0	33.4	33.7	
4H	31.8	33.1	32.1	33.4	33.7	32.6	33.9	32.9	34.2	34.5	
6H	32.3	33.5	32.6	33.8	34.2	33.3	34.5	33.6	34.8	35.2	
8H	32.4	33.6	32.8	34.0	34.3	33.6	34.8	34.0	35.1	35.5	
12H	32.5	33.7	32.9	34.0	34.4	33.9	35.1	34.3	35.4	35.7	
4H 2H	30.2	31.5	30.6	31.8	32.1	30.5	31.8	30.9	32.1	32.4	
3H	32.1	33.2	32.5	33.6	33.9	32.6	33.7	33.0	34.1	34.4	
4H	32.9	34.0	33.3	34.3	34.7	33.6	34.6	34.0	35.0	35.4	
6H	33.5	34.5	34.0	34.9	35.3	34.5	35.4	34.9	35.8	36.2	
8H	33.8	34.6	34.2	35.0	35.5	34.9	35.7	35.3	36.1	36.6	
12H	33.9	34.7	34.4	35.1	35.6	35.2	36.0	35.7	36.5	36.9	
8H 4H	33.3	34.2	33.8	34.6	35.0	33.9	34.8	34.3	35.2	35.6	
6H	34.2	34.9	34.6	35.3	35.8	35.0	35.7	35.5	36.2	36.6	
8H	34.5	35.1	35.0	35.6	36.1	35.5	36.2	36.0	36.6	37.1	
12H	34.8	35.3	35.3	35.8	36.3	36.0	36.6	36.6	37.1	37.6	
12H 4H	33.4	34.2	33.8	34.6	35.1	33.9	34.7	34.4	35.2	35.6	
6H	34.3	34.9	34.8	35.4	35.9	35.1	35.7	35.6	36.2	36.7	
8H	34.7	35.3	35.2	35.8	36.3	35.7	36.2	36.2	36.7	37.2	
Variations with the observer position at spacings:											
S = 1.0H	+ 0.1 / - 0.2					+ 0.1 / - 0.2					
1.5H	+ 0.2 / - 0.3					+ 0.2 / - 0.3					
2.0H	+ 0.2 / - 0.4					+ 0.1 / - 0.4					

CIE Pub.117, 463.6 lm Total Lamp Luminous Flux Correct (8log(F/F0) = -2.7)

C Range: 0 - 360DEG
 C Interval: 15.0DEG
 Test Speed: HIGH
 Temperature:25.3DEG
 Operators:
 Test Date:2019-12-12

γ Range: 0 - 180DEG
 γ Interval: 1.0DEG
 Test System:EVERFINE GO-2000A_V1 SYSTEM V2.0.362
 Humidity:65.0%
 Test Distance:12.586m [K=1.0000]
 Remarks:

UTILIZATION FACTORS TABLE

NAME: 软灯条	TYPE:	WEIGHT:
SPEC.:LWF-NS-132467W120-0612	DIM.: 0.5	SERIAL No.:
MFR.:LEDWIDE LIGHTING CO., LTD	SUR.:0.006*0.5	Shielding Angle:

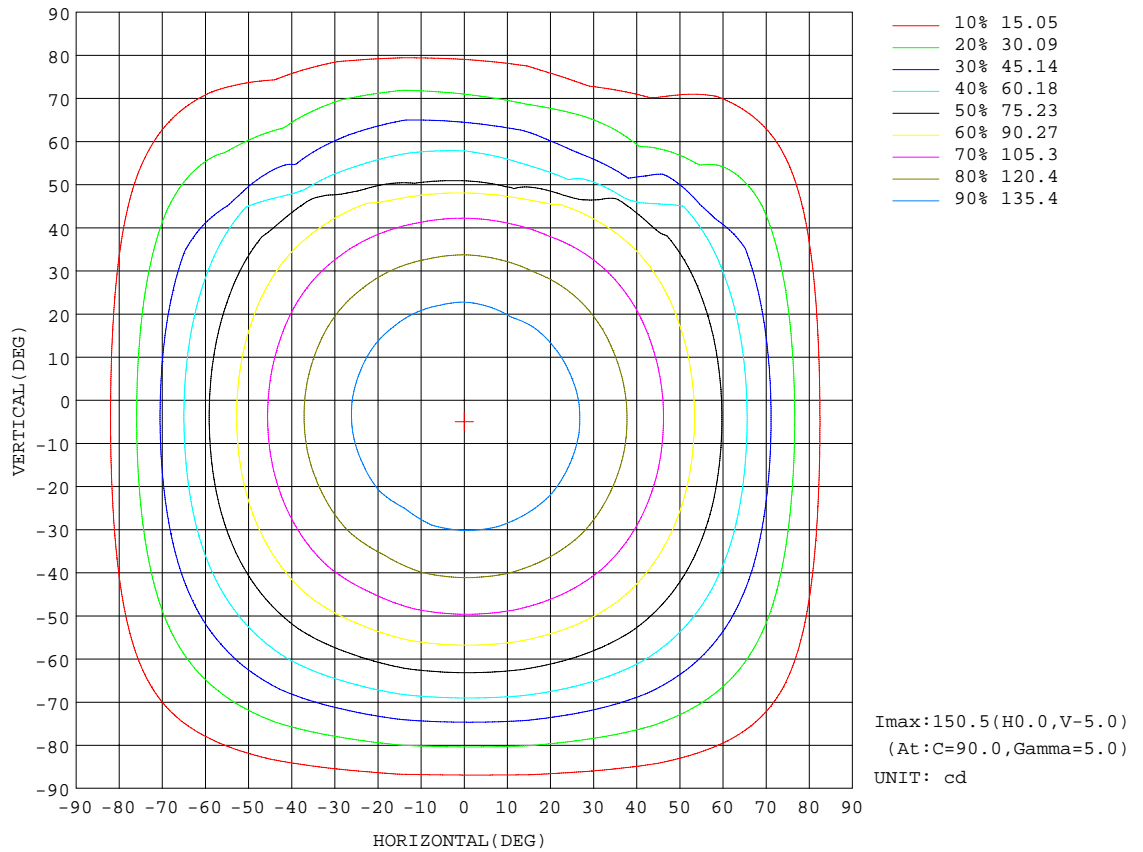
REFLECTANCE										
Ceiling	0.8	0.8	0.8	0.7	0.7	0.7	0.5	0.5	0.5	0
Walls	0.7	0.5	0.3	0.7	0.5	0.3	0.7	0.5	0.3	0
Working plane	0.2	0.2	0.2	0.2	0.2	0.2	0.2	0.2	0.2	0
ROOM INDEX	UTILIZATION FACTORS(PERCENT) $k(RI) \times RCR = 5$									
k = 0.60	56	44	37	55	44	37	54	43	37	30
0.80	66	54	47	65	54	47	63	53	46	39
1.00	74	63	56	73	62	55	71	64	55	47
1.25	82	71	63	80	70	63	77	68	62	54
1.50	87	76	69	85	75	69	82	73	67	59
2.00	94	85	78	92	83	77	88	81	75	67
2.50	98	89	83	95	88	82	91	85	80	71
3.00	101	94	88	99	92	87	94	89	84	75
4.00	105	99	94	103	97	93	98	94	90	80
5.00	108	102	98	105	100	96	100	96	93	83
ROOM INDEX	UF(total)									Direct
According to DIN EN 13032-2 2004			Suspended				SHRNOM = 1.25			

C Range: 0 - 360DEG
 C Interval: 15.0DEG
 Test Speed: HIGH
 Temperature:25.3DEG
 Operators:
 Test Date:2019-12-12

γ Range: 0 - 180DEG
 γ Interval: 1.0DEG
 Test System:EVERFINE GO-2000A_V1 SYSTEM V2.0.362
 Humidity:65.0%
 Test Distance:12.586m [K=1.0000]
 Remarks:

ISOCANDELA DIAGRAM

NAME: 软灯条	TYPE:	WEIGHT:
SPEC.:LWF-NS-132467W120-0612	DIM.: 0.5	SERIAL No.:
MFR.:LEDWIDE LIGHTING CO., LTD	SUR.:0.006*0.5	Shielding Angle:

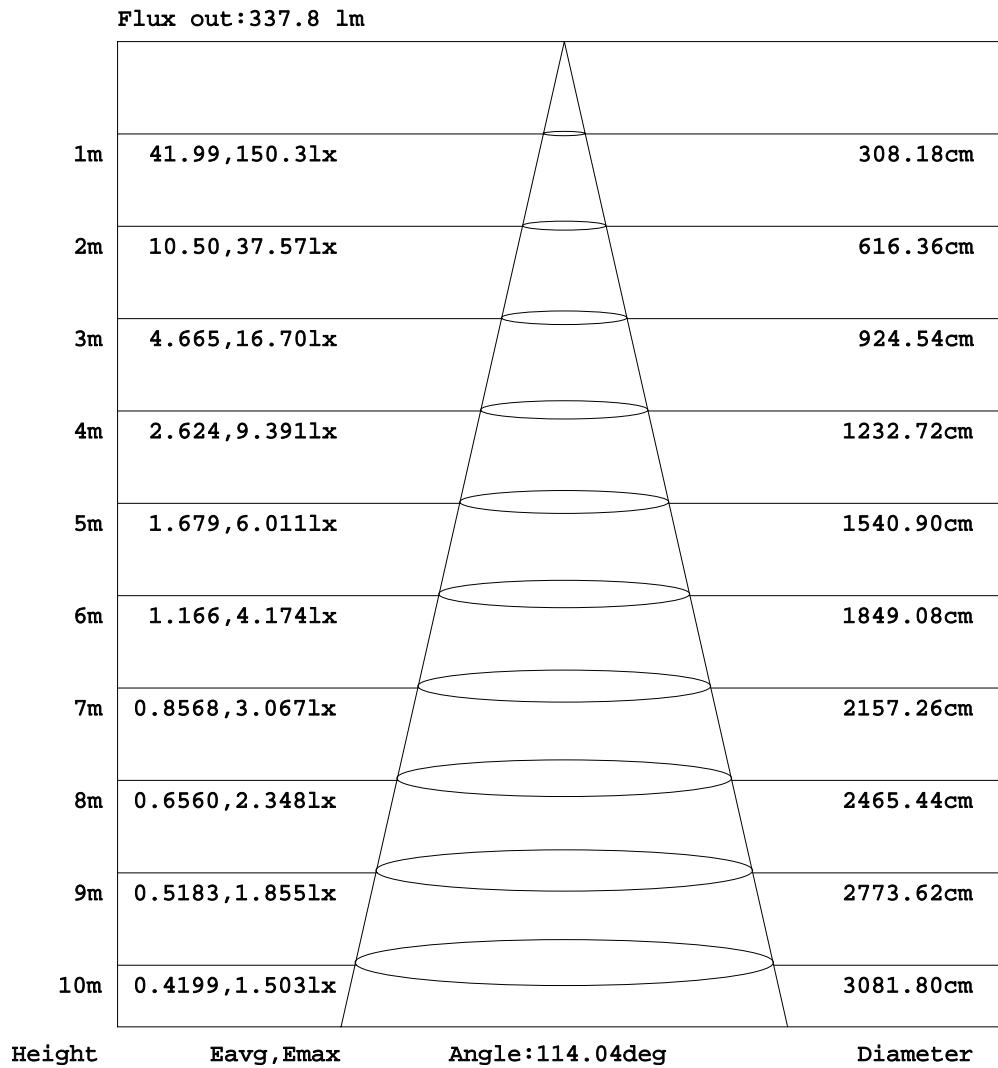


C Range: 0 - 360DEG
 C Interval: 15.0DEG
 Test Speed: HIGH
 Temperature: 25.3DEG
 Operators:
 Test Date: 2019-12-12

γ Range: 0 - 180DEG
 γ Interval: 1.0DEG
 Test System: EVERFINE GO-2000A_V1 SYSTEM V2.0.362
 Humidity: 65.0%
 Test Distance: 12.586m [K=1.0000]
 Remarks:

AAI Figure

NAME: 软灯条	TYPE:	WEIGHT:
SPEC.:LWF-NS-132467W120-0612	DIM.: 0.5	SERIAL No.:
MFR.:LEDWIDE LIGHTING CO., LTD	SUR.:0.006*0.5	Shielding Angle:

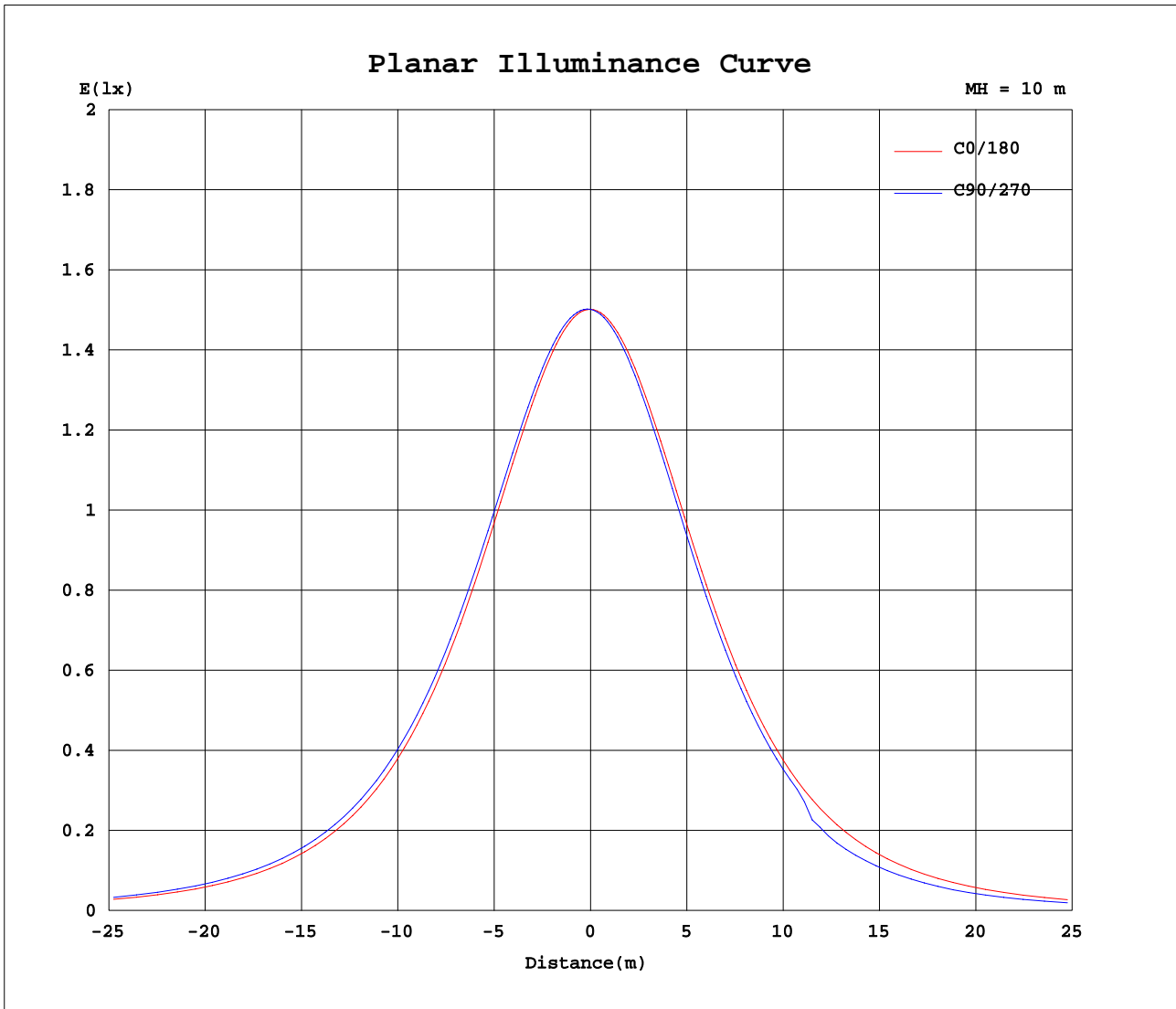


Note:The Curves indicate the illuminated area and the average illumination when the luminaire is at different distance.

C Range: 0 - 360DEG
 C Interval: 15.0DEG
 Test Speed: HIGH
 Temperature:25.3DEG
 Operators:
 Test Date:2019-12-12

γ Range: 0 - 180DEG
 γ Interval: 1.0DEG
 Test System:EVERFINE GO-2000A_V1 SYSTEM V2.0.362
 Humidity:65.0%
 Test Distance:12.586m [K=1.0000]
 Remarks:

Planar Illuminance Curve



C Range: 0 - 360DEG
 C Interval: 15.0DEG
 Test Speed: HIGH
 Temperature: 25.3DEG
 Operators:
 Test Date: 2019-12-12

γ Range: 0 - 180DEG
 γ Interval: 1.0DEG
 Test System: EVERFINE GO-2000A_V1 SYSTEM V2.0.362
 Humidity: 65.0%
 Test Distance: 12.586m [K=1.0000]
 Remarks:

LUMINOUS DISTRIBUTION INTENSITY DATA

NAME: 软灯条	TYPE:	WEIGHT:
SPEC.:LWF-NS-132467W120-0612	DIM.: 0.5	SERIAL No.:
MFR.:LEDWIDE LIGHTING CO., LTD	SUR.:0.006*0.5	Shielding Angle:

Table--1

UNIT: cd

C(DEG) γ (DEG)	0	15	30	45	60	75	90	105	120	135	150	165	180	195	210	225	240	255	270
0	150	150	150	150	150	150	150	150	149	150	150	150	150	150	150	150	150	150	150
5	150	150	150	150	150	150	150	150	149	150	149	149	150	149	149	149	149	149	149
10	148	149	149	149	150	150	150	149	148	149	148	148	148	148	147	147	147	146	146
15	146	146	147	147	148	148	148	147	146	146	146	146	145	145	144	143	143	143	143
20	142	143	143	144	144	145	145	144	143	143	143	142	141	140	140	139	139	138	138
25	137	138	139	140	140	141	141	140	139	139	138	137	136	135	135	134	133	133	133
30	131	133	134	135	135	136	136	135	134	134	133	132	131	129	128	127	127	126	126
35	124	126	127	128	129	130	129	129	127	127	126	125	124	122	121	120	119	118	118
40	116	118	119	121	122	122	122	122	120	120	118	117	115	114	112	111	110	110	109
45	107	109	111	112	113	114	114	114	112	111	110	108	106	104	103	101	101	99.8	99.7
50	97.3	99.6	101	103	104	105	105	104	102	102	99.9	98.2	96.1	94.0	92.4	90.8	89.8	79.4	78.3
55	86.3	88.8	90.6	92.5	93.6	94.4	94.3	93.9	92.1	91.2	89.1	87.2	85.0	82.7	81.0	79.2	67.2	67.0	66.1
60	74.4	77.1	79.0	81.1	82.2	83.1	82.9	82.6	80.7	79.8	77.4	75.4	72.9	70.4	68.6	53.9	56.1	56.2	55.5
65	61.5	64.4	66.5	68.8	69.9	70.9	70.7	70.4	68.5	67.4	64.8	62.6	60.0	57.3	48.3	41.1	44.6	46.7	43.9
70	48.1	51.1	53.3	55.7	56.8	57.9	57.7	57.4	55.5	54.2	51.5	49.2	46.4	43.7	33.7	30.6	35.3	35.7	32.2
75	34.4	37.5	39.7	42.1	43.4	44.5	44.3	44.0	42.1	40.6	37.8	35.3	32.6	30.1	25.9	21.5	24.0	24.7	22.4
80	20.8	24.0	26.4	28.8	30.1	31.2	31.1	30.9	29.1	27.5	24.7	22.3	19.7	17.5	16.0	13.0	15.0	14.6	13.4
85	9.55	12.2	14.6	16.9	18.2	19.3	19.1	18.8	17.2	15.5	13.0	10.8	8.55	7.60	7.26	6.34	6.83	6.55	6.37
90	1.56	4.20	6.08	7.92	8.99	9.93	9.84	10.2	8.46	6.92	4.79	3.03	1.38	1.71	1.93	1.80	1.91	1.98	2.06
95	0.38	0.66	1.94	3.12	4.08	4.79	4.39	0.85	0.70	0.73	0.63	0.54	0.39	0.53	0.63	0.59	0.64	0.79	0.65
100	0.57	0.62	0.58	1.02	1.73	1.99	1.79	0.46	0.37	0.44	0.50	0.62	0.54	0.52	0.67	0.57	0.66	0.64	0.64
105	0.78	0.84	0.65	0.68	0.63	0.71	0.57	0.59	0.46	0.58	0.62	0.83	0.68	0.63	0.82	0.69	0.81	0.71	0.77
110	1.00	1.05	0.87	0.85	0.80	0.87	0.75	0.78	0.66	0.76	0.80	1.04	0.85	0.77	0.97	0.84	0.94	0.85	0.94
115	1.17	1.24	1.12	1.05	0.98	1.05	0.95	0.97	0.84	0.98	1.08	1.26	0.99	0.92	1.11	1.02	1.08	1.03	1.08
120	1.36	1.44	1.32	1.29	1.17	1.27	1.17	1.18	1.05	1.21	1.30	1.45	1.12	1.06	1.23	1.16	1.22	1.15	1.21
125	1.56	1.58	1.47	1.57	1.38	1.45	1.39	1.39	1.31	1.54	1.46	1.59	1.25	1.20	1.36	1.29	1.36	1.29	1.34
130	1.70	1.75	1.59	1.68	1.63	1.69	1.68	1.67	1.57	1.62	1.57	1.69	1.39	1.35	1.49	1.40	1.47	1.40	1.46
135	1.76	1.84	1.69	1.73	1.72	1.91	1.94	1.89	1.71	1.72	1.68	1.79	1.53	1.48	1.73	1.56	1.59	1.50	1.56
140	1.85	1.89	1.72	1.82	1.84	1.99	2.04	2.01	1.77	1.86	1.75	1.86	1.66	1.59	1.82	1.78	1.70	1.62	1.68
145	1.84	1.91	1.81	1.92	1.93	2.01	2.05	2.06	1.86	1.93	1.82	1.91	1.81	1.72	1.86	1.93	1.85	1.72	1.76
150	1.84	1.96	1.86	2.00	1.98	2.01	2.05	2.11	1.96	2.00	1.97	1.91	1.96	1.85	1.95	1.95	2.13	1.86	1.91
155	1.90	2.00	1.96	2.06	1.98	2.01	2.05	2.14	2.00	2.07	2.05	1.91	2.12	1.96	2.05	2.00	2.17	2.03	2.05
160	1.96	2.09	2.08	2.15	2.01	2.04	2.05	2.15	2.02	2.24	2.05	1.93	2.25	2.10	2.17	2.09	2.18	2.24	2.21
165	2.01	2.17	2.10	2.17	2.03	2.06	2.09	2.17	2.11	2.23	2.04	1.97	2.38	2.22	2.28	2.22	2.28	2.24	2.35
170	2.10	2.25	2.15	2.22	2.09	2.15	2.14	2.23	2.23	2.25	2.04	2.05	2.48	2.32	2.38	2.26	2.36	2.30	2.41
175	2.33	2.39	2.31	2.35	2.23	2.28	2.25	2.38	2.36	2.32	2.19	2.29	2.51	2.39	2.46	2.38	2.40	2.38	2.47
180	2.49	2.51	2.43	2.46	2.36	2.38	2.50	2.58	2.39	2.41	2.36	2.41	2.51	2.43	2.48	2.40	2.40	2.39	2.51

C Range: 0 - 360DEG
 C Interval: 15.0DEG
 Test Speed: HIGH
 Temperature:25.3DEG
 Operators:
 Test Date:2019-12-12

γ Range: 0 - 180DEG
 γ Interval: 1.0DEG
 Test System:EVERFINE GO-2000A_V1 SYSTEM V2.0.362
 Humidity:65.0%
 Test Distance:12.586m [K=1.0000]
 Remarks:

LUMINOUS DISTRIBUTION INTENSITY DATA

NAME: 软灯条	TYPE:	WEIGHT:
SPEC.:LWF-NS-132467W120-0612	DIM.: 0.5	SERIAL No.:
MFR.:LEDWIDE LIGHTING CO., LTD	SUR.:0.006*0.5	Shielding Angle:

Table--2

UNIT: cd

C(DEG) γ (DEG)	285	300	315	330	345														
0	150	149	150	150	150														
5	148	147	148	149	149														
10	146	145	146	147	147														
15	143	142	143	144	144														
20	138	137	139	139	141														
25	132	132	133	134	135														
30	126	126	127	128	129														
35	118	118	119	121	122														
40	109	109	111	112	114														
45	99.4	99.7	101	103	105														
50	75.1	89.0	90.8	92.7	94.7														
55	62.4	60.5	79.2	81.4	83.5														
60	51.7	48.2	46.9	69.1	71.4														
65	40.7	36.9	34.2	55.5	58.4														
70	28.8	26.7	25.9	30.6	44.9														
75	18.8	15.1	16.2	24.0	31.2														
80	11.6	9.41	8.49	14.9	18.0														
85	5.67	3.72	4.02	6.02	7.71														
90	1.97	0.82	1.17	1.85	1.74														
95	0.56	0.52	0.45	0.48	0.35														
100	0.56	0.63	0.54	0.66	0.44														
105	0.68	0.77	0.71	0.85	0.60														
110	0.85	0.93	0.89	0.99	0.79														
115	0.99	1.08	1.04	1.12	0.91														
120	1.13	1.23	1.17	1.21	1.06														
125	1.27	1.34	1.30	1.31	1.17														
130	1.37	1.43	1.40	1.43	1.30														
135	1.47	1.53	1.47	1.53	1.43														
140	1.60	1.63	1.58	1.66	1.58														
145	1.70	1.76	1.68	1.77	1.68														
150	1.83	1.88	1.81	1.89	1.84														
155	1.95	2.00	1.94	2.01	1.97														
160	2.09	2.12	2.09	2.14	2.09														
165	2.18	2.24	2.20	2.25	2.22														
170	2.32	2.34	2.26	2.33	2.28														
175	2.38	2.41	2.36	2.38	2.36														
180	2.53	2.46	2.38	2.38	2.41														

C Range: 0 - 360DEG
 C Interval: 15.0DEG
 Test Speed: HIGH
 Temperature:25.3DEG
 Operators:
 Test Date:2019-12-12

γ Range: 0 - 180DEG
 γ Interval: 1.0DEG
 Test System:EVERFINE GO-2000A_V1 SYSTEM V2.0.362
 Humidity:65.0%
 Test Distance:12.586m [K=1.0000]
 Remarks: